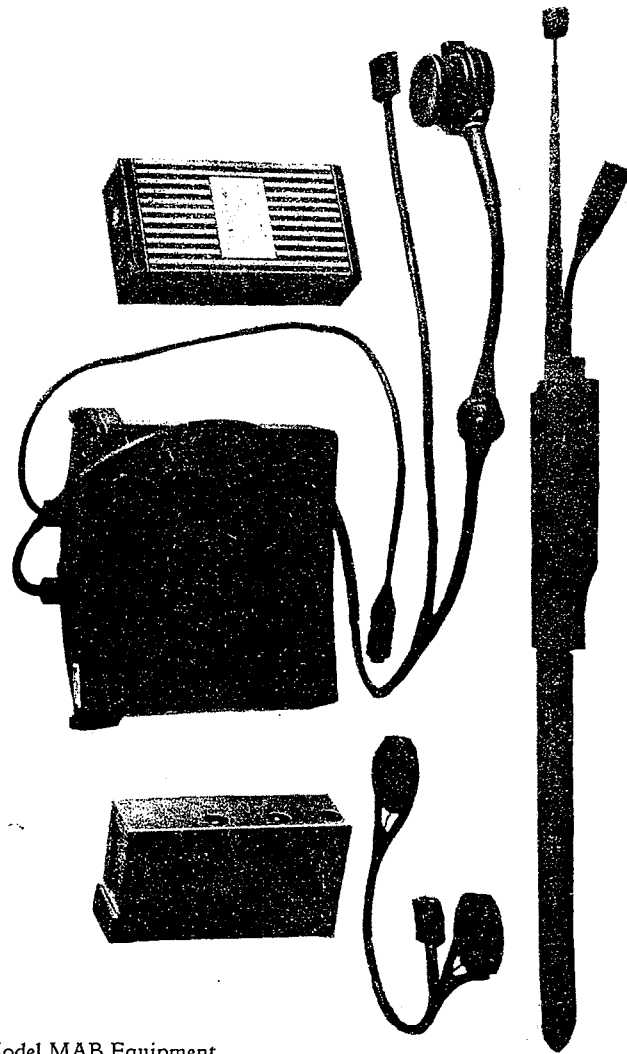


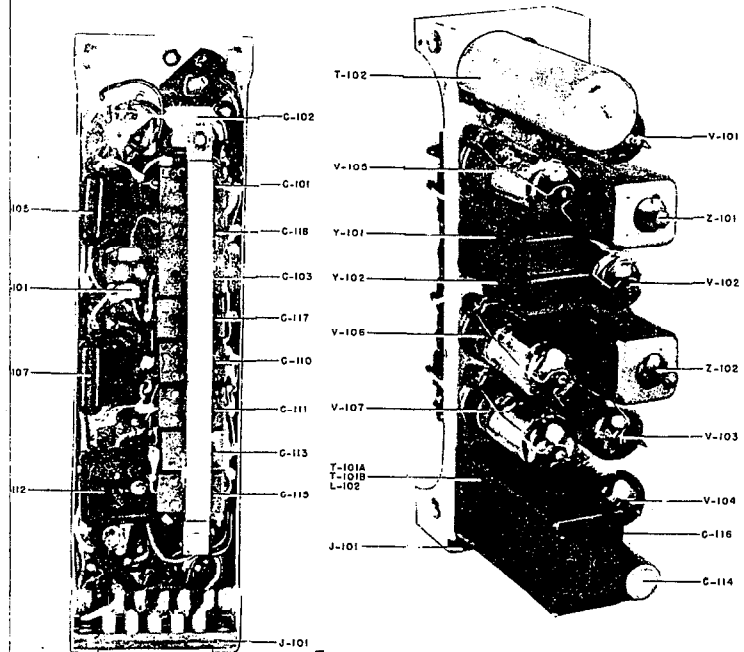
NAVY TYPE MAB
RADIO TELEPHONE TRANSMITTING & RECEIVING EQUIPMENT



Model MAB Equipment

Fig. 1.

NAVY TYPE MAB
RADIO TELEPHONE TRANSMITTING & RECEIVING EQUIPMENT



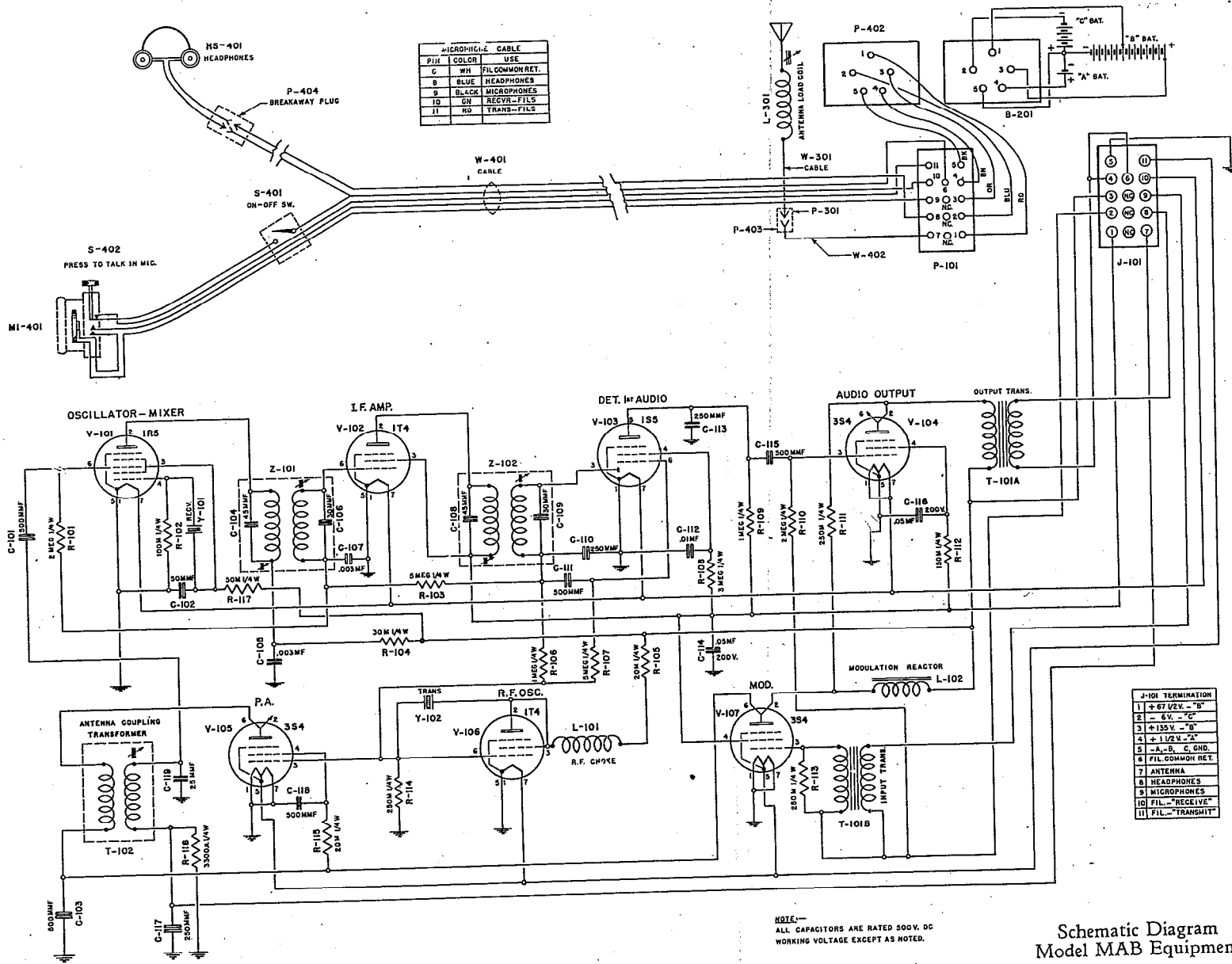
MODEL MAB
RADIO TRANSMITTER & RECEIVER

TOP AND BOTTOM VIEWS
OF RADIO UNIT
FIG. 2

Fig. 2.

C-1

NAVY TYPE MAB RADIO TELEPHONE TRANSMITTING & RECEIVING EQUIPMENT



MICROPHONE CABLE	FILE	COLOR	USE
	G	WH	FIL COMMON RET.
	B	BLUE	HEADPHONES
	8	BLACK	MICROPHONES
	10	GR	RECV-FILS
	11	RD	TRANS-FILS

J-101 TERMINATION	
11	+67.5V. - "B"
2	- 6V. - "C"
3	+135V. - "A"
4	+ 1 1/2 V. - "A"
5	-A, -B, C, GND.
6	FIL. COMMON RET.
7	ANTENNA
8	HEADPHONES
9	MICROPHONES
10	FIL. - "RECEIVE"
11	FIL. - "TRANSMIT"

NOTE:—
ALL CAPACITORS ARE RATED 500V. DC
WORKING VOLTAGE EXCEPT AS NOTED.

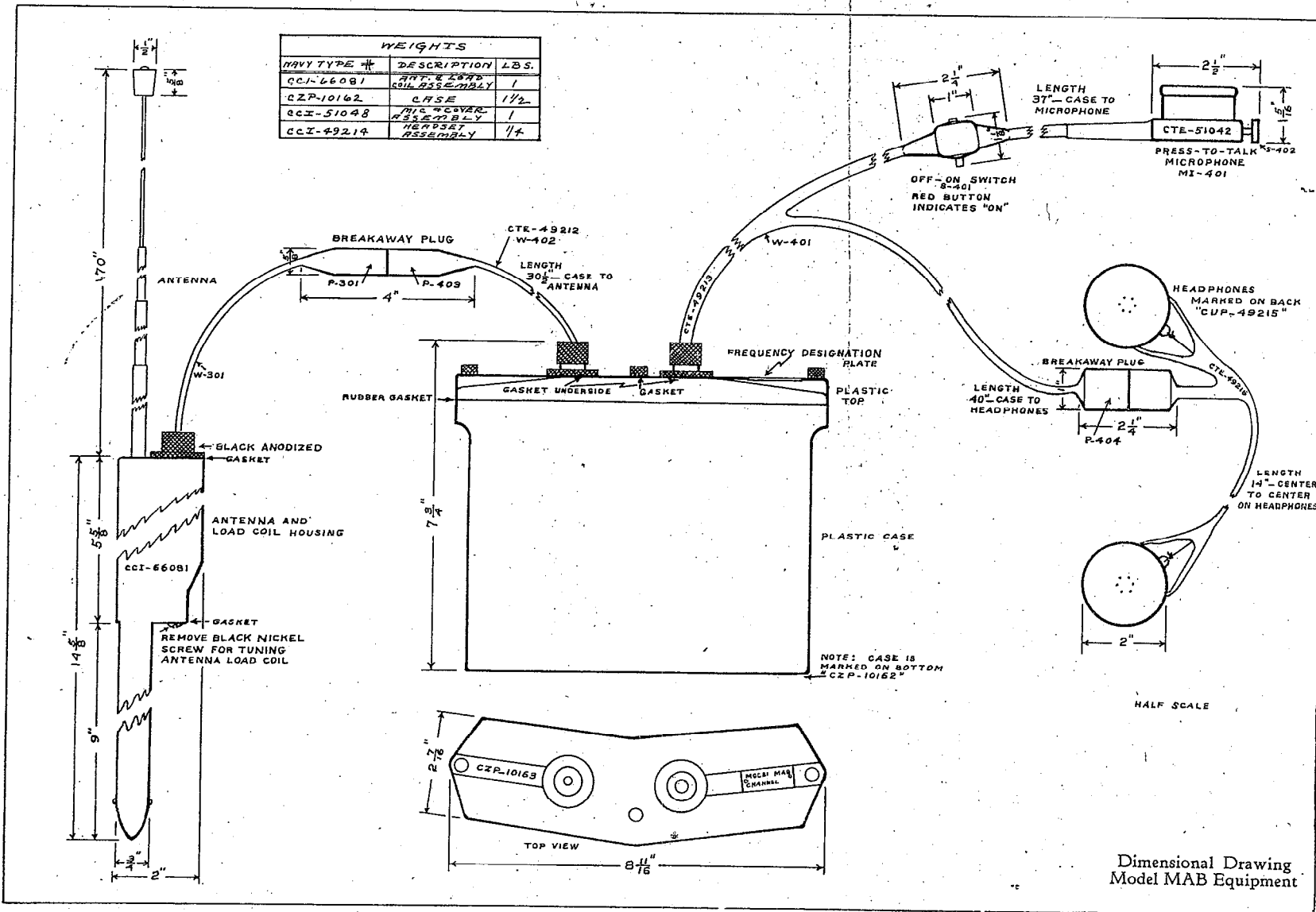
Schematic Diagram
Model MAB Equipment

Fig. 3.

C-2

**NAVY TYPE MAB
RADIO TELEPHONE TRANSMITTING & RECEIVING EQUIPMENT**

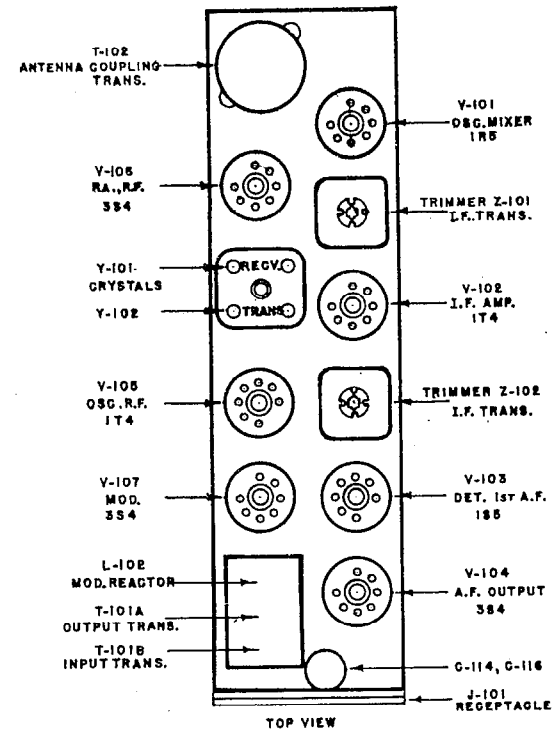
WEIGHTS		
NAVY TYPE #	DESCRIPTION	LBS.
CCI-66081	ANT. & LOAD COIL ASSEMBLY	1
CZP-10162	CASE	1 1/2
CCI-51048	PT. TO TALK MICROPHONE ASSEMBLY	1
CCI-49214	HEADSET ASSEMBLY	1/4



Dimensional Drawing
Model MAB Equipment

C-3

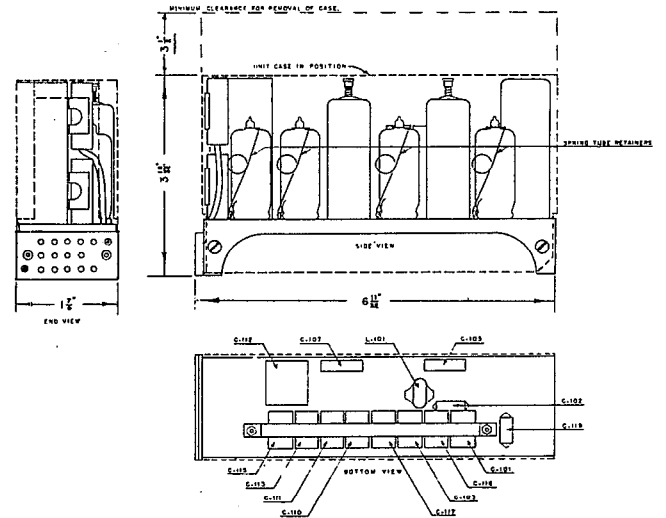
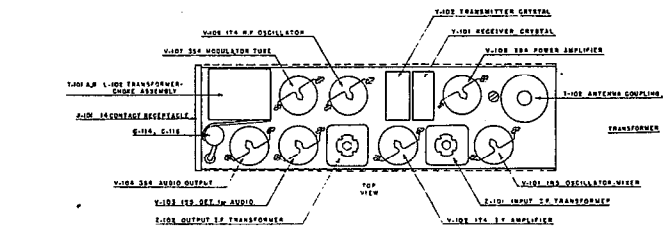
NAVY TYPE MAB
RADIO TELEPHONE TRANSMITTING & RECEIVING EQUIPMENT



Type CCI-43045 A Transmitter-Receiver Unit
Placement Diagram—Top View
Model MAB Equipment

C-7

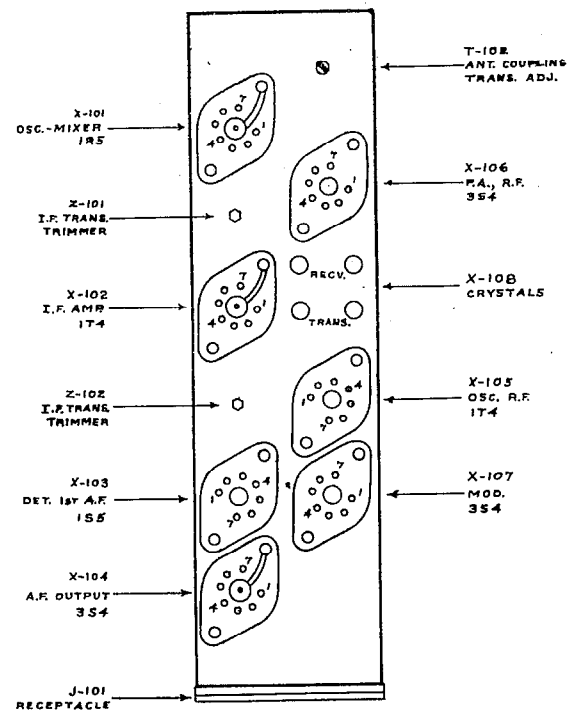
NAVY TYPE MAB
 RADIO TELEPHONE TRANSMITTING & RECEIVING EQUIPMENT



Type CCI-43045 A Transmitter-Receiver Unit
 Dimensional Drawing
 Model MAB Equipment

C-5

**NAVY TYPE MAB
RADIO TELEPHONE TRANSMITTING & RECEIVING EQUIPMENT**



Type CCI-43045 A Transmitter-Receiver Unit
Placement Diagram—Bottom View
Model MAB Equipment

C-6 END